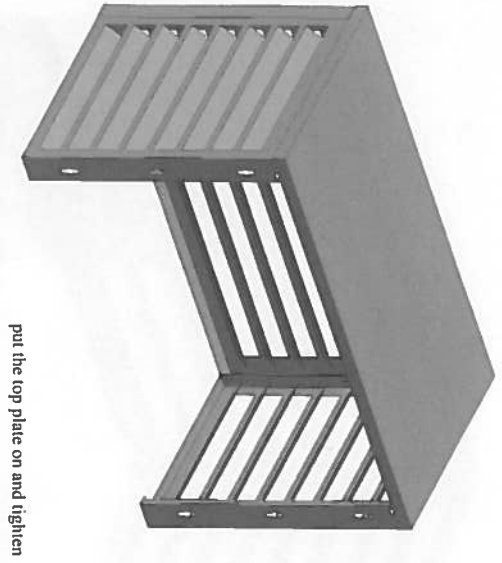
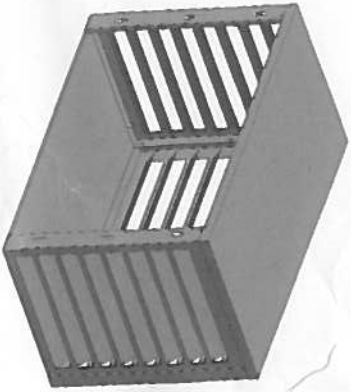


Step 4



put the top plate on and tighten

Step 5



fix bottom plate or leveling screws / legs

aircover

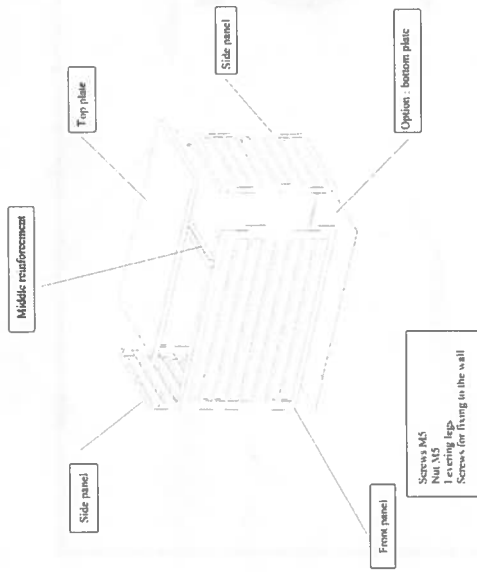
Mounting Instructions

aircover

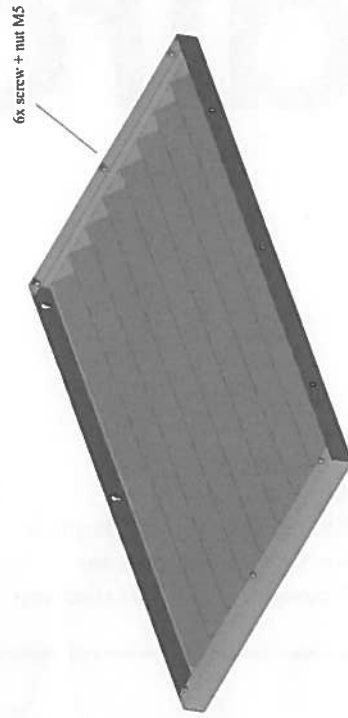


Airco ombouw
Klimaanlagen Schutzgitter
Air Conditioning cover
Couverture de climatisation

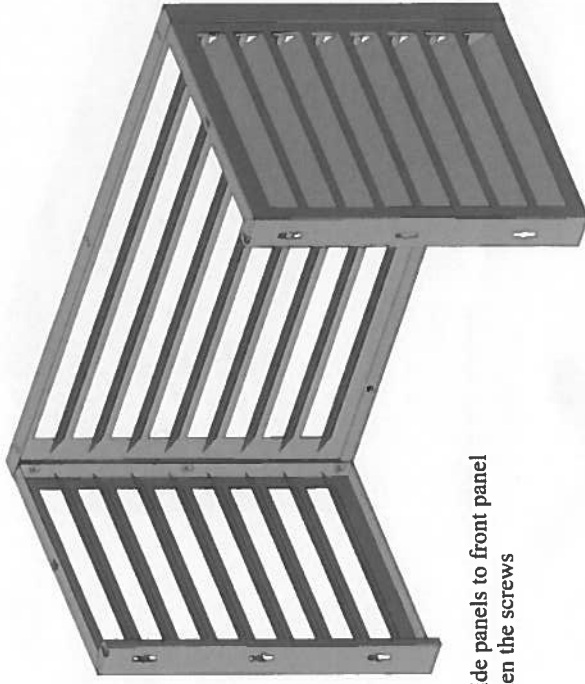
1 - Content of package



Step 1



Step 2



Fix side panels to front panel
Tighten the screws

Step 3

